



Top Left:
Cityscape. 2024
Ink, watercolors on paper,
76x55, 2024 2) Soldiers, ink
on paper,
65x50 cm
Janna Shulrufer ©
All rights reserved.

Top Right:
Cityscape. 2024
(Detail)
Janna Shulrufer ©
All rights reserved.

Janna Shulrufer

The mystical Influence of Zefat

“Zefat, one of the oldest continuously inhabited cities in the world, is steeped in history and mystique. Its medieval narrow streets and the profound influence of Kabbalah have left an indelible mark on my artistic sensibilities, enriching my work. I explore various techniques, including oil painting, drawing, watercolor, and etching, each serving as a medium to capture the essence of my thoughts and experiences.



Portrait. 2024
Ink on paper, 76x56 cm
Janna Shulrufer ©
All rights reserved.



Soldiers, 2024
Ink on paper, 65x50 cm
Janna Shulrufer ©
All rights reserved.

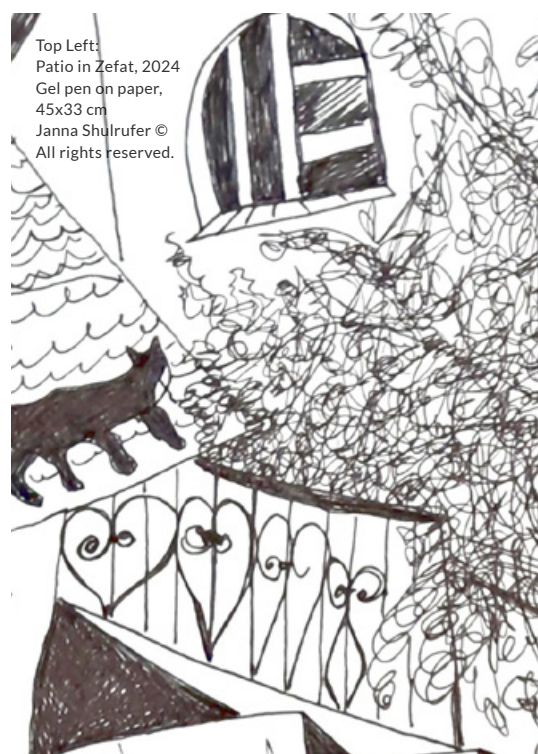


Reading a book, 2024
Ink on paper, 65x50 cm
Janna Shulrufer ©
All rights reserved.



“I am an Israeli and international artist based in the Israeli picturesque northern city of Zefat (Safeed), residing within the vibrant Artist's Colony. My journey began in Moscow, where I immersed myself in the study of drawing and art history at the esteemed Pedagogical University. Later, I honed my skills in the intricate art of etching, specifically drypoint, at the Artist's House in Tel Aviv. I actively participate in numerous exhibitions and art events, both within Israel and internationally, and my artwork is in private collections worldwide.

My creative practice is deeply rooted in traditional genres and media, drawing rich inspiration from the world surrounding me. The landscapes, diverse people, bustling street scenes, resonant music, and the captivating books I delve into all serve as fuel for my artistic expression. Much of my work is born from personal experiences and profound emotions, enabling me to communicate and reflect on the complexities of life. Consequently, my pieces often weave together threads of reality and imagination, creating a tapestry of feelings and themes that resonate on multiple levels.



Top Left:
Patio in Zefat, 2024
Gel pen on paper,
45x33 cm
Janna Shulrufer ©
All rights reserved.



Janna Shulrufer

Zefat, one of the oldest continuously inhabited cities in the world, is steeped in history and mystique. Its medieval narrow streets and the profound influence of Kabbalah have left an indelible mark on my artistic sensibilities, enriching my work. I explore various techniques, including oil painting, drawing, watercolor, and etching, each serving as a medium to capture the essence of my thoughts and experiences.

From a young age, I discovered a deep passion for drawing, a skill I have nurtured throughout my life. Much like an innate sense of music, artistic talent is a gift that must be cultivated. However, for those lacking this inherent ability, it may be wiser not to pursue it."

- Janna Shulrufer



My creative practice is deeply rooted in traditional genres and media, drawing rich inspiration from the world surrounding me. The landscapes, diverse people, bustling street scenes, resonant music, and the captivating books I delve into all serve as fuel for my artistic expression." - Janna Shulrufer

Top Left:
Janna Shulrufer
Portrait ©
All rights reserved.

Top:
Street in Old City, 2024
Gel pen on paper,
45x33 cm.
Janna Shulrufer ©
All rights reserved.

Untitled, 2024
Ink on paper,
69x49 cm
Janna Shulrufer ©
All rights reserved.

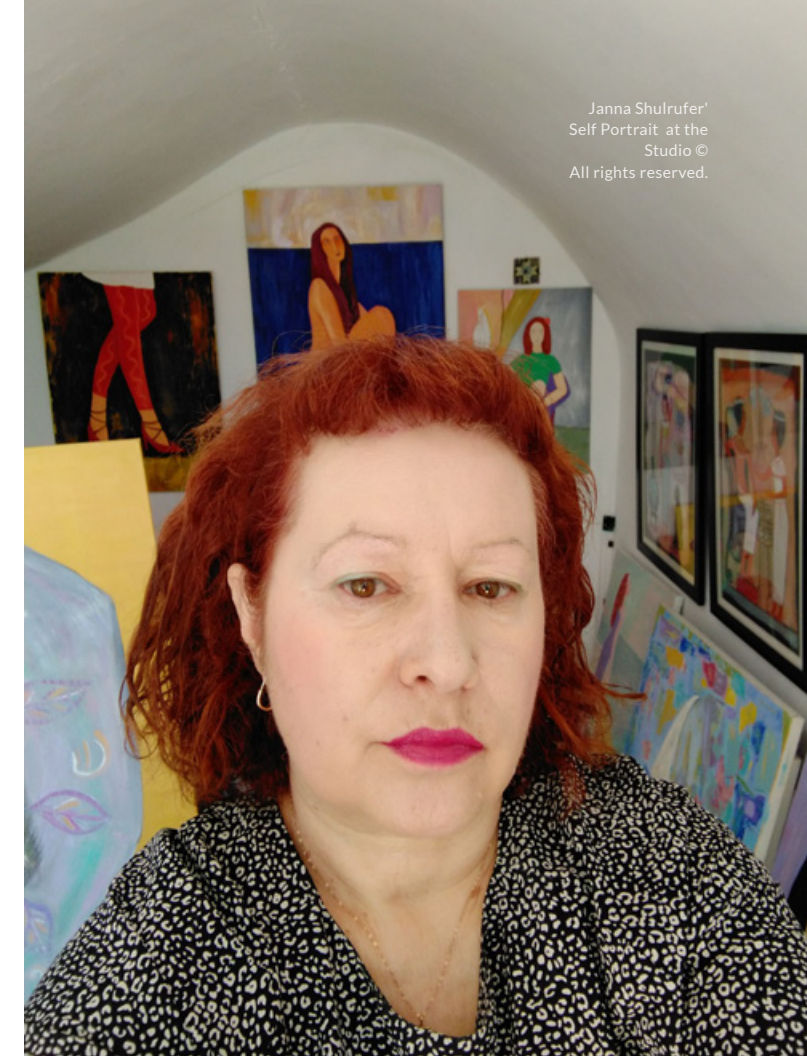


The mystical Influence of Zefat

Untitled, 2024.
Ink, watercolors
on paper,
76x56 cm
Janna Shulrufer
© All rights
reserved.



Janna Shulrufer
Studio ©
All rights reserved.



Janna Shulrufer
Self Portrait at the
Studio ©
All rights reserved.

Over the years, Janna Shulrufer has built an impressive portfolio, showcasing her artwork in both group and solo exhibitions across the globe. In 2024, she showcased her talents at notable events such as the 44th Mini Print International in the picturesque seaside town of Cadaqués, Spain, and participated in the engaging exhibition "The Body Language" with Itsliquid Group in Rome, Italy. She also took part in the prestigious Rome International Art Fair for its 11th edition, further solidifying her presence in the European art scene.

In 2023, Shulrufer's works were prominently displayed at Artexpo Basel in Switzerland, a significant platform for contemporary art. The previous year, 2022, saw her participating in the Swiss Art Expo presented by ARTBOX. GROUPS, where she exhibited alongside a diverse group of talented artists.

Looking back to 2021, Janna's creations were featured at the esteemed 41st Mini Print International of Cadaqués in Spain and the 19th Lessedra World Art Print Annual in Sofia, Bulgaria, both of which highlighted her versatility and recognition in printmaking.

The mystical Influence of Zefat





David and Shaul,
David played the harp before King
Shaul and his daughter Michal, who
would become David's first wife.
Oil on canvas, 80x120, 2019
Janna Shulrufer © All rights
reserved.



Exodus, 2019
The Jews' exodus from
Egypt was led by Moses,
who received the tablets of
the covenant with the
Ten Commandments.
Oil on canvas,
100x120 cm
Janna Shulrufer ©
All rights reserved.

**Janna
Shulrufer**

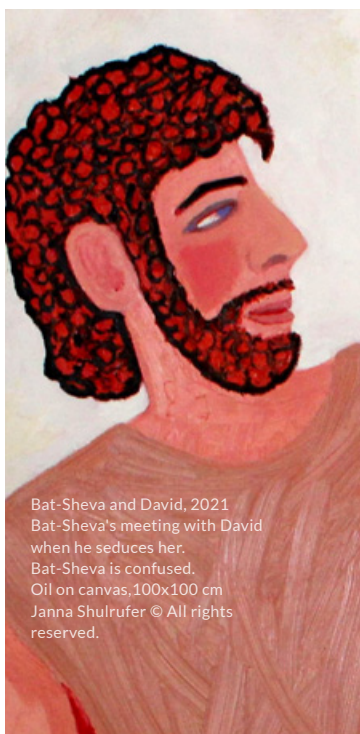


*The mystical
Influence of Zefat*

Bottom Left:
Abraham's temptation,
The temptation of Abraham
was when God demanded
that he sacrifice his son
Itzhak to show his devotion
to God.
Oil on canvas, 120x80, 2020
Janna Shulrufer © All rights
reserved.



Bottom Right:
Itzhak and Rivka,
Rivka from Laban's family
became Itzhak's wife twenty
years later and bore him
Yaakov and Esau.
Oil on canvas, 110x80, 2023
Janna Shulrufer © All rights
reserved.



Bat-Sheva and David, 2021
Bat-Sheva's meeting with David
when he seduces her.
Bat-Sheva is confused.
Oil on canvas, 100x100 cm
Janna Shulrufer © All rights
reserved.

One of her most memorable exhibitions took place in 2018 when she held a captivating solo exhibition at the Artists of Israel House in Jerusalem, Israel. This exhibition allowed her to engage deeply with local and international audiences. Shulrufer has established herself as a dynamic figure in the contemporary art world through these significant exhibitions.



The mystical Influence of Zefat



Much of my work is born from personal experiences and profound emotions, enabling me to communicate and reflect on the complexities of life. Consequently, my pieces often weave together threads of reality and imagination, creating a tapestry of feelings and themes that resonate on multiple levels.

Still life of flowers, 2024
Oil on linen, 95x60 cm.
Janna Shulrufer ©
All rights reserved.

Shulrufer



Janna Shulrufer

October, 2024
Oil on linen,
120x95 cm
Janna Shulrufer ©
All rights reserved.

שולרופר



Street musicians
(klezmers).
Oil on linen,
95x120 cm. 2024
Janna Shulrufer ©
All rights reserved.

The mystical Influence of Zefat

**Janna
Shulrufer**

WEBSITE:
JANNASHULRUFER.COM

AVAILABLE ARTWORKS:
ARTMAJEUR.COM/JANNA-SHULRUFER

SAATCHIART.COM/SHULRUFER